



New Construction

PROGRESS UPDATE
February 2024

Southeast Pre K-12 School





PROJECT SUMMARY

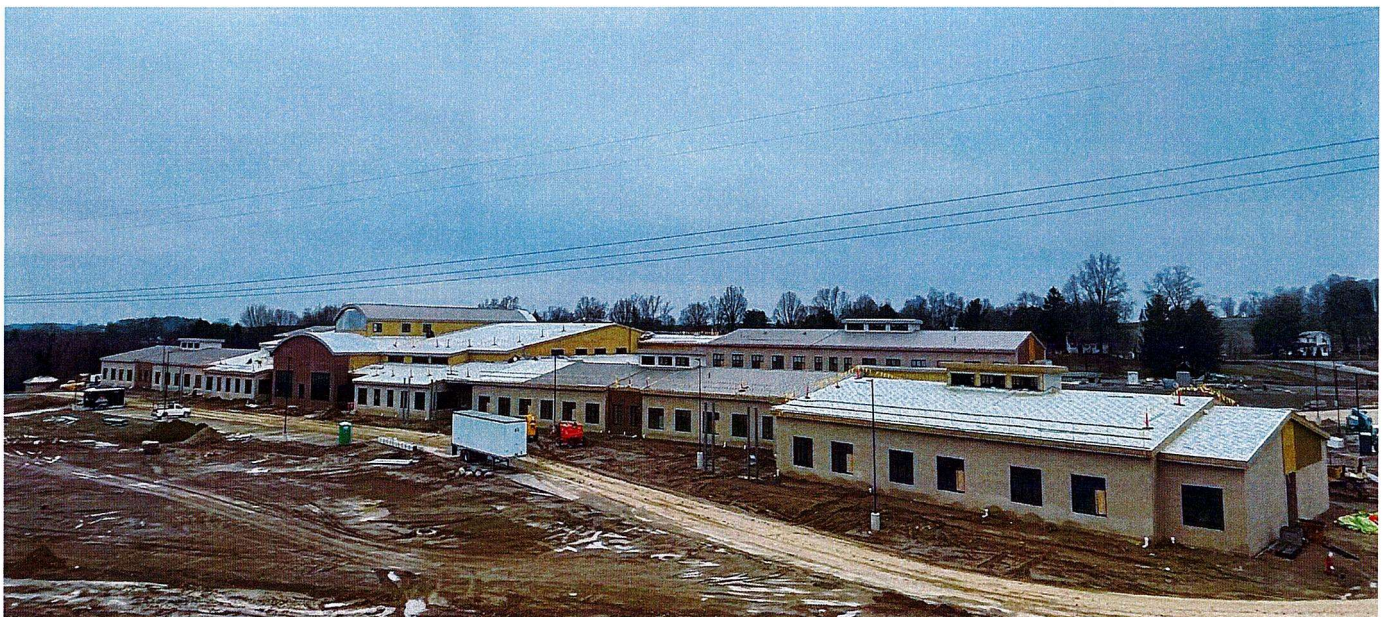
Site Development & Landscaping

February 2024 Progress

- Northside Downspout Storm Piping– 100%
- Southside Downspout Storm Piping– 100%
- Site Feeder Wire– 95%

Upcoming Progress

- Site Concrete



PROJECT SUMMARY

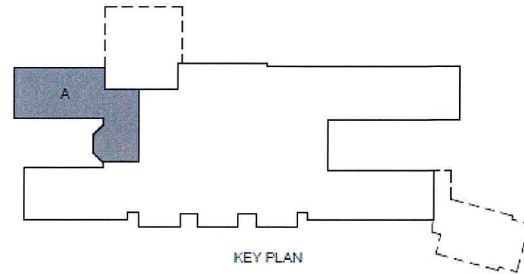
Area A

February 2024 Progress

- Wall Panels– 100%
- Flooring– 80%
- Casework– 100%
- Ceiling Pads– 40%
- Final Coat Paint– 20%
- Window Blinds– 100%

Upcoming Progress

- Corridor Flooring
- Ceiling Pads
- Final Coat Paint



PROJECT SUMMARY

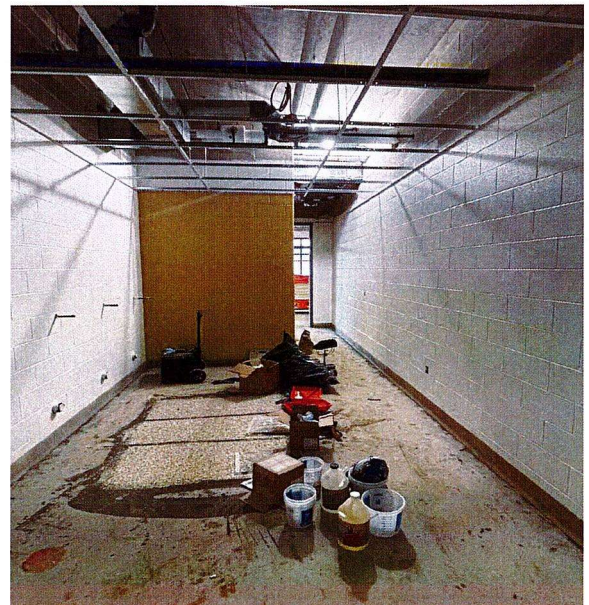
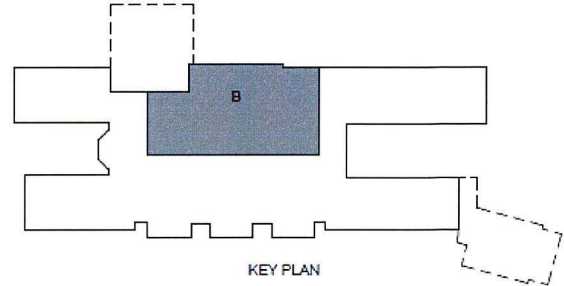
Area B

February 2024 Progress

- Pipe Labeling– 50%
- Second Floor MEP Overhead Ongoing– 85%
- Pour Stairs– 80%
- Install Walk in– 100%
- Wall Panels– 80%
- Plumbing Insulation– 90%
- Prime Paint– 15%

Upcoming Progress

- Plumbing Insulation
- Install Kitchen Hood
- Second Floor MEP Overhead Rough-in
- Install Elevator
- Resinous Flooring
- Prime Paint
- Wall Panels



PROJECT SUMMARY

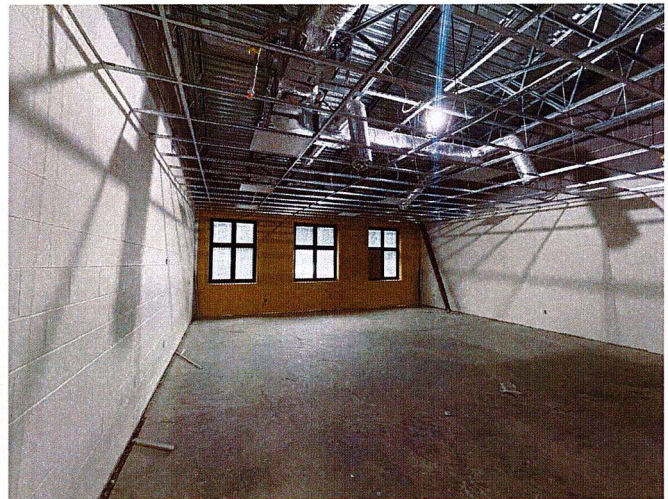
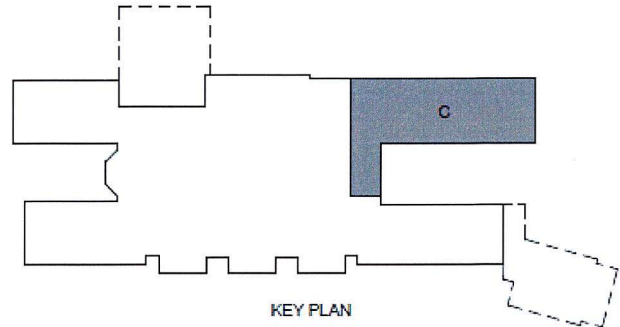
Area C

February 2024 Progress

- Wall Panels– 30%
- HVAC Insulation– 100%
- Prime Paint– 100%
- Ceiling Grid– 100%
- Ceiling Pads– 10%
- Tech Cabling– 100%
- Flooring– 35%

Upcoming Progress

- Wall Panels
- Flooring
- Casework
- Ceiling Pads



PROJECT SUMMARY

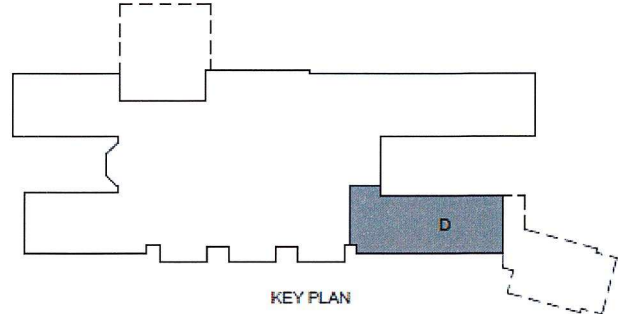
Area D

February 2024 Progress

- HVAC Insulation– 35%
- Prime Paint– 90%
- Roof Finishes– 85%
- Wall Panels– 50%
- Hang Wall Board– 100%

Upcoming Progress

- HVAC Insulation
- Prime Paint
- Roof Finishes
- Wall Panels



PROJECT SUMMARY

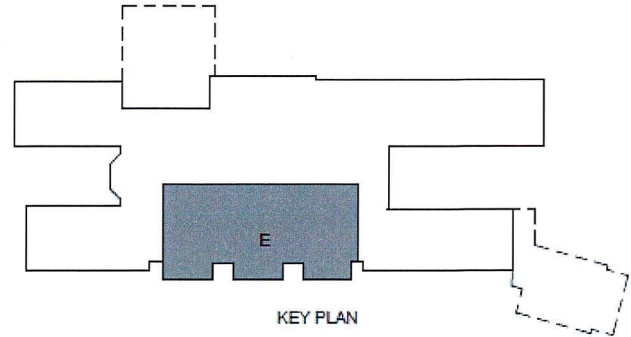
Area E

February 2024 Progress

- MEP Piping– 70%
- Prime Paint– 25%
- Wall Framing– 65%
- Roof Finishes– 10%
- Wall Panels– 5%

Upcoming Progress

- MEP Piping
- Prime Paint
- Gym Equipment
- Wall Framing
- Wall Panels

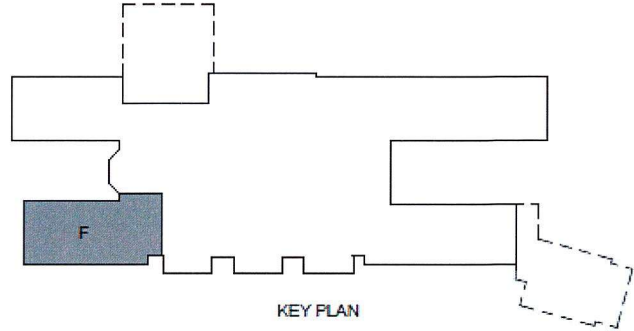


PROJECT SUMMARY

Area F

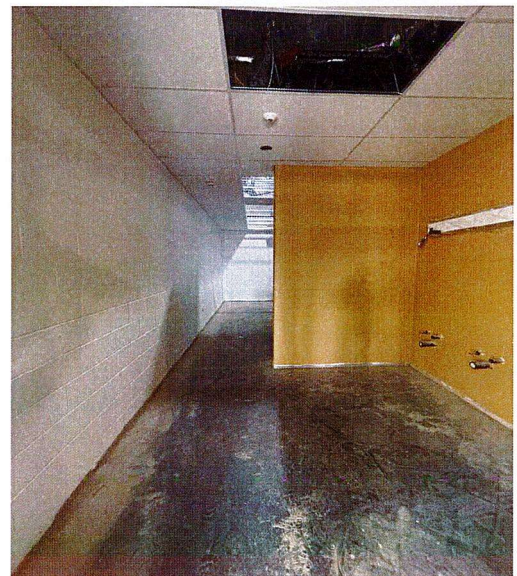
February 2024 Progress

- Casework– 40%
- Ceiling Pads– 40%
- Final Coat Paint– 20%
- Flooring– 90%
- Window Blinds– 100%



Upcoming Progress

- Ceiling Pads
- Corridor Flooring
- Casework
- Final Coat Paint



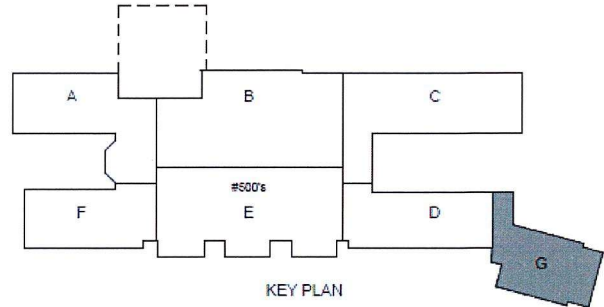


PROJECT SUMMARY

Area G

February 2024 Progress

- MEP Piping– 90%
- Spray Foam– 100%



Upcoming Progress

- MEP Piping
- Prime Paint

